

MIRA MRT SERIES USER AND INSTRUCTION MANUAL



ATTENTION

- Incorrect assembly of the device to fall and to injuries. From where it could be.
- Support for official contact your service.
- Setup without doing before guide carefully One way read.
- Combustion end of gases life areas does not affect for Use in open areas and places with adequate ventilation.
- the heater This and from the rain protect!

Revision Date:03/07/2023



ASSEMBLY USE AND CARE GUIDE CONTENTS TABLE

1.0	IMPORTANT NOTES AND WARNINGS	3
2.0	PRODUCT DESCRIPTION	3
2.1	Product Features	4
2.2	Device Structure	9
3.0	INSTALLATION CONDITIONS	10
3.1	Gas Requirements	10
3.2.	Ideal Assembly Sizes	11
4.0	GAS AND ELECTRIC NETWORK CONNECTION INSTRUCTION	12
5.0	OPERATING AND USE INSTRUCTION	12
5.1.	Gas Leak Test	12
5.2	Electric to the network Connection Instruction	12
5.3	Remote Control And Usage	12
5.4	Turning Off the Device	13
6.0	CARE AND SERVICE	13
7.0	FAULT DETECTION AND PROBLEM TROUBLESHOOTING	14
8.0	GAS CONTROL VALVE TECHNICAL FEATURES	15
9.0	ELECTRIC SCHEME AND CABLE DIAGRAM	16



1.0 IMPORTANT NOTES AND WARNINGS

- This device is not suitable for use indoors or in closed areas.
- Device surfaces reach high temperatures during operation. Avoid direct contact while the device is operating.
- Before intervening the device, wait for it to cool down to room temperature and disconnect the power supply.
- Make sure that the electrical installation to which the heater is connected is grounded and connected to a 2 A V automaton for each heater. This is required for warranty.
- Mount the devices installed in open areas in a way that they will not receive rain water.
- Place the device at least 2 meters away from flammable materials, furniture and plants.
- Never use the heater in environments where explosive, flammable or volatile substances exist.
- During initial start-up, odor and a small amount of smoke may be emitted. The smell will disappear after approximately 30 minutes of operation.
- Mount the heater in places inaccessible to children in playgrounds.
- It is recommended to have the heater checked by authorized services once a year for a fee.

2.0 PRODUCT DESCRIPTION

- Mira MRT products are REMOTE CONTROLLED, 3-STAGE, NATURAL GAS PIPE RADIANT, which provides advantages in economical and comfortable heating of workplaces and especially open or semi-open areas where smoking is permitted. They are heaters.
- MRT COMPACT TUBE HEATERS, Restaurant, Cafe, Open or semi-open spaces, especially those with low ceilings, such as verandas,
- MRT STANDARD TUBE HEATERS are models that can be used for economical and quick heating of workplaces such as factories, workshops, warehouses, warehouses, etc. with adequate ventilation.

2.1. ÜRÜN ÖZELLİKLERİ

MODEL		MRT CL12	MRT CL18	MRT CL22	MRT CL26	MRT CL30
Category		II2H3B/P (G20, G30, G31)				
Chimney Type		B23,C13,C33;C53				
Rated Heat Load (kW)	Level 3 (max.)	12 kW	18 kW	22 kW	26 kW	30 kW
	Level 2	9 kW	14 kW	16 kW	19 kW	22 kW
	Level one	6 kW	9 kW	11th kW	13 kW	22 kW
Burner Gas Pressure (mbar)	Level 3 (max.)	12 mbar	12 mbar	12 mbar	12 mbar	12 mbar
	Level 2	10 mbar	10 mbar	10 mbar	10 mbar	10 mbar
	Level one	8 mbar	8 mbar	8 mbar	8 mbar	8 mbar
Natural gas consumption (m ³ /h)	Level 3 (max.)	1.25 (m ³ /h)	1.88 (m ³ /h)	2.29 (m ³ /h)	2.71 (m ³ /h)	3.13 (m ³ /h)
	Level 2	0.94 (m ³ /h)	1.46 (m ³ /h)	1.66 (m ³ /h)	1.98 (m ³ /h)	2.29 (m ³ /h)
	Level one	0.63 (m ³ /h)	0.93 (m ³ /h)	1.15 (m ³ /h)	1.35 (m ³ /h)	1.56 (m ³ /h)
Weight (kg)		42	56	70	84	98
Dimensions (cm)		300*30*20	450*30*20	600*30*20	750*30*20	900*30*20
Radiant Pipe Diameter of (mm)		Ø101.6				
Flue Pipe Diameter of (mm)		Ø101.6				
Burner Breast Diameter of (mm)		3.30	4.00	4.40	4.80	5.30
Gas Connection		G3/4 inches				

- The devices are remote controlled and 3 levels of temperature control can be made.
- Many devices can be controlled with one remote control. It can be used manually when necessary.

2.1. ÜRÜN ÖZELLİKLERİ

MODEL		MRT SL14	MRT SL18	MRT SL22	MRT SL26	MRT SL30	MRT SL34
Category		II2H3B/P (G20, G30, G31)					
Chimney Type		B23,C13,C33;C53					
Rated Heat Load (kW)	Level 3 (max.)	14 kW	18 kW	22 kW	26 kW	30 kW	34 kW
	Level 2	9 kW	13 kW	16 kW	19 kW	22 kW	25 kW
	Level one	6 kW	9 kW	11th kW	13 kW	15 kW	17 kW
Burner Gas Pressure (mbar)	Level 3 (max.)	12 mbar	12 mbar	12 mbar	12 mbar	12 mbar	12 mbar
	Level 2	10 mbar	10 mbar	10 mbar	10 mbar	10 mbar	10 mbar
	Level one	8 mbar	8 mbar	8 mbar	8 mbar	8 mbar	8 mbar
Natural gas consumption (m ³ /h)	Level 3 (max.)	1.45 m ³ /h	1.88 m ³ /h	2.30 m ³ /h	2.71 m ³ /h	3.13 m ³ /h	3.54 m ³ /h
	Level 2	1.35 m ³ /h	1.35 m ³ /h	1.67 m ³ /h	1.98 m ³ /h	2.29 m ³ /h	2.60 m ³ /h
	Level one	0.62 m ³ /h	0.94 m ³ /h	1.15 m ³ /h	1.35 m ³ /h	1.56 m ³ /h	1.77 m ³ /h
Weight (kg)		38	46	52	58	64	70
Dimensions (cm)		300*30*20	450*30*20	600*30*20	750*30*20	900*30*20	1050*30*20
Radiant Pipe Diameter of (mm)		Ø101.6					
Flue Pipe Diameter of (mm)		Ø101.6					
Burner Breast Diameter of (mm)		3.30	4.00	4.40	4.80	5.30	5.70
Gas Connection		G3/4 inches					

2.1. ÜRÜN ÖZELLİKLERİ

MODEL		MRT SL38	MRT SL42	MRT SL46	MRT SL48	MRT SL52
Category		II2H3B/P (G20, G30, G31)				
Chimney Type		B23,C13,C33;C53				
Rated Heat Load (kW)	Level 3 (max.)	38 kW	42 kW	46 kW	48 kW	52 kW
	Level 2	30 kW	33 kW	36 kW	38 kW	42 kW
	Level one	22 kW	25 kW	27 kW	28 kW	31 kW
Burner Gas Pressure (mbar)	Level 3 (max.)	12 mbar	12 mbar	12 mbar	12 mbar	12 mbar
	Level 2	10 mbar	10 mbar	10 mbar	10 mbar	10 mbar
	Level one	8 mbar	8 mbar	8 mbar	8 mbar	8 mbar
Natural gas consumption (m ³ /h)	Level 3 (max.)	3.96 m ³ /h	4.38 m ³ /h	4.79 m ³ /h	5.00 m ³ /h	5.42 m ³ /h
	Level 2	3.12 m ³ /h	3.44 m ³ /h	3.75 m ³ /h	3.96 m ³ /h	4.37 m ³ /h
	Level one	2.29 m ³ /h	2.60 m ³ /h	2.81 m ³ /h	2.91 m ³ /h	3.23 m ³ /h
Weight (kg)		46	76	82	90	98
Dimensions (cm)		1200*30*20	1350*30*20	1500*30*20	1650*30*20	1800*30*20
Radiant Pipe Diameter of (mm)		Ø101.6				
Flue Pipe Diameter of (mm)		Ø101.6				
Burner Breast Diameter of (mm)		6.30	6.80	7.40	7.70	8.20
Gas Connection		G3/4 inches				

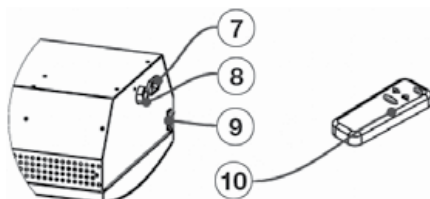
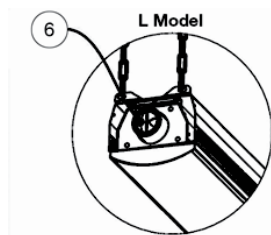
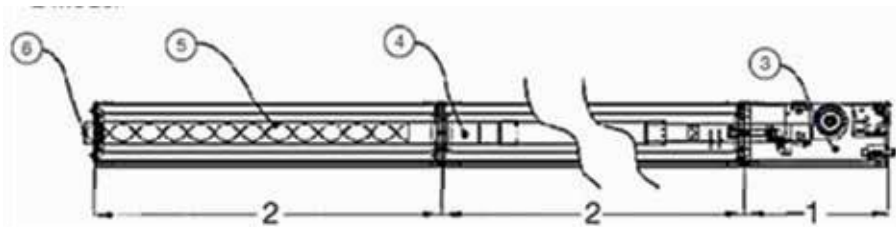
2.1. ÜRÜN ÖZELLİKLERİ

MODEL		MRT SU18	MRT SU26	MRT SU34	MRT SU40	MRT SU46	MRT SU52	MRT SU58
Category		I12H3B/P (G20, G30, G31)						
Chimney Type		B23,C13,C33;C53						
Rated Heat Load (kW)	Level 3 (max.)	18 kW	26 kW	34 kW	40 kW	46 kW	52 kW	58 kW
	Level 2	13 kW	19 kW	25 kW	30 kW	35 kW	39 kW	44 kW
	Level one	9 kW	13 kW	17 kW	20 kW	23 kW	26 kW	269
Burner Gas Pressure (mbar)	Level 3 (max.)	12 mbar	12 mbar	12 mbar	12 mbar	12 mbar	12 mbar	12 mbar
	Level 2	10 mbar	10 mbar	10 mbar	10 mbar	10 mbar	10 mbar	10 mbar
	Level one	8 mbar	8 mbar	8 mbar	8 mbar	8 mbar	8 mbar	8 mbar
Natural gas consumption (m ³ /h)	Level 3 (max.)	1.88 m ³ /h	2.71 m ³ /h	3.55 m ³ /h	4.17 m ³ /h	4.79 m ³ /h	5.42 m ³ /h	6.05 m ³ /h
	Level 2	1.35 m ³ /h	1.98 m ³ /h	2.60 m ³ /h	3.13 m ³ /h	3.65 m ³ /h	4.07 m ³ /h	4.59 m ³ /h
	Level one	0.94 m ³ /h	1.36 m ³ /h	1.77 m ³ /h	2.08 m ³ /h	2.40 m ³ /h	2.71 m ³ /h	3.03 m ³ /h
Weight (kg)		43.5	57	71.5	85.5	99.5	114	128
Dimensions (cm)		300*30*20	450*30*20	600*30*20	750*30*20	900*30*20	1050*30*20	1200*30*20
Radiant Pipe Diameter of (mm)		Ø101.6						
Flue Pipe Diameter of (mm)		Ø101.6						
Burner Breast Diameter of (mm)		4.00	4.80	5.70	6.60	7.40	8.20	8.50
Gas Connection		G3/4 inches						

2.1. ÜRÜN ÖZELLİKLERİ

MODEL		MRT CU18	MRT CU26	MRT CU 32	MRT CU 38	MRT CU 44
Category		II2H3B/P (G20, G30, G31)				
Chimney Type		B23,C13,C33;C53				
Rated Heat Load (kW)	Level 3 (max.)	18 kW	26 kW	32 kW	38 kW	44 kW
	Level 2	13 kW	19 kW	24 kW	28 kW	33 kW
	Level one	9 kW	13 kW	17 kW	19 kW	22 kW
Burner Gas Pressure (mbar)	Level 3 (max.)	12 mbar	12 mbar	12 mbar	12 mbar	12 mbar
	Level 2	10 mbar	10 mbar	10 mbar	10 mbar	10 mbar
	Level one	8 mbar	8 mbar	8 mbar	8 mbar	8 mbar
Natural gas consumption (m ³ /h)	Level 3 (max.)	1.88 m ³ /h	2.71 m ³ /h	3.34 m ³ /h	3.96 m ³ /h	4.56 m ³ /h
	Level 2	1.35 m ³ /h	1.98 m ³ /h	2.50 m ³ /h	2.92 m ³ /h	3.44 m ³ /h
	Level one	0.94 m ³ /h	1.36 m ³ /h	1.67 m ³ /h	1.98 m ³ /h	2.28 m ³ /h
Weight (kg)		128	144	188	195	210
Dimensions (cm)		300*30*20	450*30*20	600*30*20	750*30*20	900*30*20
Radiant Pipe Diameter of (mm)		Ø89				
Flue Pipe Diameter of (mm)		Ø89				
Burner Breast Diameter of (mm)		4.00	4.80	5.50	6.30	7,10
Gas Connection		G3/4 inches				

2.2. DEVICE STRUCTURE



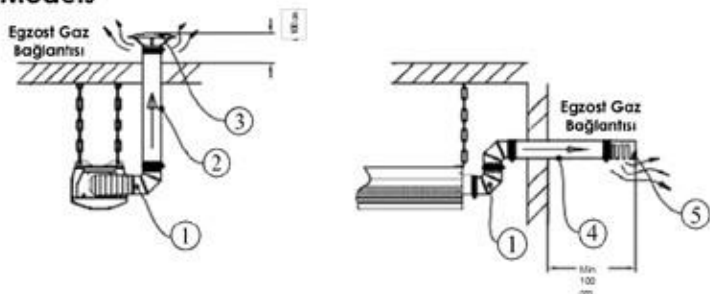
DEVICE STRUCTURE	
one- Burner safe	6- Flue output
2- Reflector	7- 220 VAC 50 Hz. Electrical Connection
3- Burner System	8- $\frac{3}{4}$ Natural Gas Connection
4- Radiant pipe	9- Manual Level key
5- turbulator	10- Remotely Control

3.0 SETUP CONDITIONS

Product assembly MOST 416 – one to standard suitable aspect should be done.

FLUE AND EXHAUST SYSTEM MODELS

L Models



The exhaust line after the device can be calculated as like this.

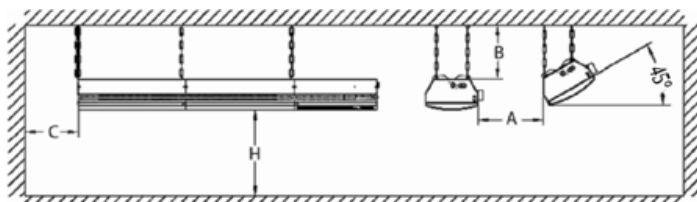
The exhaust pipe max.imit (m) = 25 – device length

Chimney Dimensions		
D (cm) Flue Size		Ø 101.6 - 89mm
1	Stainless Steel Flue pipe	Ø 101.6 - 89mm
2	Vertical Chimney Pipe	Ø 101.6 - 89mm
3	Vertical Rain Protective	Ø 101.6 - 89mm
4	Horizontal Chimney Pipe	Ø 101.6 - 89mm
5	Horizontal Rain protective	Ø 101.6 - 89mm

3.1. Gas Requirements

- device run for Only Use approved gas written on the label.
- The gas requirement is 20-60mbar for input for G20
- The gas requirement is 30-60mbar for input for G30.

3.2. Ideal Assembly Dimensions



Minimum Dimensions				
Model	A (cm)	B. (cm)	C. (cm)	H (m)
MRT CL12	300			2,3
MRT CL18	300			2,3
MRT CL22	300			2,3
MRT CL26	300			2,3
MRT CL30	300			2,3
MRT SL 14	300	50	30	2.4
MRT SL 18	300			2.4
MRT SL 22	300			2.4
MRT SL 26	300			2.4
MRT SL 30	300			2.4
MRT SL 34	300			2.4
MRT SL 38	300			2.4
MRT SL 42	300			2.4
MRT SL 46	300			2.4
MRT SL 48	300			2.4
MRT SL 52	300			2.4
MRT WATER 18	300	50	30	2.4
MRT WATER 26	300			2.4
MRT SU 34	300			2.5
MRT WATER 40	300			2.5
MRT SU 46	300			2.6
MRT SU 52	300			2.6
MRT SU 58	300			2.8
MRT CU 18	300	50	30	2.4
MRT CU 26	300			2.4
MRT CU 32	300			2.4
MRT CU 38	300			2.4
MRT CU 44	300			2.4

4.0 GAS AND ELECTRIC NETWORK CONNECTION INSTRUCTIONS

ATTENTION!

All gas connection operations should be done by qualified persons.

5.0 OPERATING AND USE INSTRUCTIONS

5.1. Gas Leak Test

WARNING

- Before starting the heater, check the gas flexible hose connection points.
Check with soap bubble or gas leak alarm device.
- 220 V/50 Hz Grounded electrical supply to the heater, definitely 2 Ampere V
It must be connected to the vending machine.

5.2. Connection Instruction to the Electrical Network

ATTENTION!

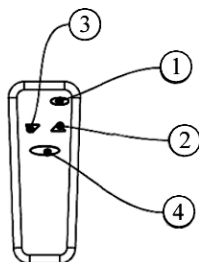
The device case is grounded against electrical leakage. Make sure that the electrical installation you use when operating the device is grounded.

NOTE: When the heater is first commissioned, you may need to turn the device on and off a few times to evacuate the air in the gas installation. First, ensure that the air is released from the gas flex hose.

Indicator Message	Explanation
off	Device closed, strength there is
On.	Ignition being done
On - 1.	First level working status
On - 2.	Second level study status
On - 3.	Third step operating status
Err 1,2,3,4	Combustion unsuccessful. Detail for Fault removal to the section see

5.3. Remote Control And Use of

Heater stage, your device with together sent control help It can be controlled with .



1 – device opening / closing

2 – Level upgrade

3 – Level reduction

When you press the button numbered "1" on the remote control, the heater will operate at the level where it was stopped. Button no. 2 is used for adjusting the step upwards, button no. 3 is used for adjusting the step downwards.

Afar control product with together incoming two piece 1.5V alkaline battery with is working.



ATTENTION!

- If there is an explosion, noise or excessive sound coming from the device,
- Do not continue operating your device if it does not heat up sufficiently to fulfill its heater function.

5.4 Turning Off the Device

- Short-term shutdown: Turn the device to "Off" position.
- Long-term shutdown: Turn the device to "Off" position and turn off the gas installation.

Turn off the valve and the electricity supply.

NOTE: After the device is turned off, it takes 2 minutes to turn it on again.

6.0 CARE AND SERVICE



ATTENTION!

7.0 While performing maintenance, turn off your device and wait until it cools down to room temperature.

7.1 •For the heater to work efficiently, it must be maintained regularly.

- 7.2** •Maintenance should only be performed by an authorized service.
- 7.3** •Gas valve and air circulation holes on the heater casing should be kept clean. Dust, dirt and particles that will cover the holes should be cleaned from the device. Remove dust and dirt from the device with a damp cloth or compressed air.
- 7.4** When the device is not operated for a long time (especially in the summer months), protect the heater from dust, leaves, insects, etc. by placing a bag on the pipe (exhaust) outlet and air suction (fan) part. Do not reuse the heater without cleaning it.
- FAULT DETECTION AND PROBLEM REMOVAL**

Error Code	Possible Reasons	Solution Suggestions
Err 1. Err 2. Err 3	APS module is not working	Control your Presostat (air pressure switch) and its silicon cables
Err 4.	ionization electrode	ionization electrode control please. Problem continue if change it.
	Wrong wiring	of cables electronic to the scheme suitability control please.
Err 5	no gas	Gas source control please. in plumbing D.Gas of pressure 20 mbar to happen attention please
	ionization electrode does not detect flame	ionization electrode control please. Problem continue if change it
	Wrong wiring	of cables electronic to the scheme suitability control please.
Err 6.	Gas deduction	Gas source control please. Minimum natural gas network of pressure 20 mbar since sure be.
	Extreme Wind	extremely windy burning in the weather full It may not be. device extreme from the wind protect.
Err 8.	Electronic card defective	Control cables

POSSIBLE FAILURES

Findin g	Possible reason	Solution Proposal
Device It doesn't turn on. / Strength It's not coming.	Electric no	Electric source please check
The device works but constantly open up is closing.	Natural gas plumbing	Gas pressure control do it.
	Weather conditions	Extreme Windy in the weather combustion may not be complete.
Gas no, There is no burning .	Gas on the line weather	on the line of the air ensure its evacuation .
Gas the smell	Loose pipe connection	All connections squeezing soapy solution with check for leaks
	Defective regulator	regulator replace it.
	Damaged flexible hose	hose replace it.

Problem And in your malfunctions official with your service contact go ahead. Official services for with guide See the accompanying authorized service list attachment.

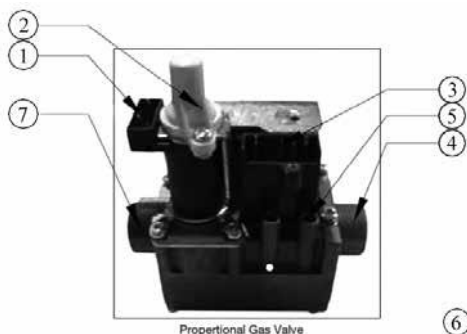
8.0 GAS CONTROL VALVE TECHNICAL FEATURES

The device provides gas supply to the burner and is monitored by the control system. gas to the valve has. Modulation stages And burner gas The inlet pressure is adjusted via the valve.

gas valve Standard Features

- Maximum gas pressure: 60 mbar
- Study temperature: -20°C ~ +60°C
- Electric Feed: 220 VAC 50 Hz.
- property Valve Voltage: D.C. 13.2V / 165mA

The maximum and minimum burner gas inlet pressures are set at the adjusting screw [2]. is being done. Gas network pressure And burner entrance pressure values are measured from slots [5], [7].



GAS VALVE DETAILS

GAS VALVE DETAILS			
one	Modulation coil Strength Connection	5	Gas Entrance pressure Measurement nipple
2	Burner Gas pressure Adjustment screw	6	Gas Exit pressure Measurement nipple
3	Socket cable (220 VAC 50Hz)	7	Natural gas output 3/4 "
4	Natural gas entrance 3/4 "		

